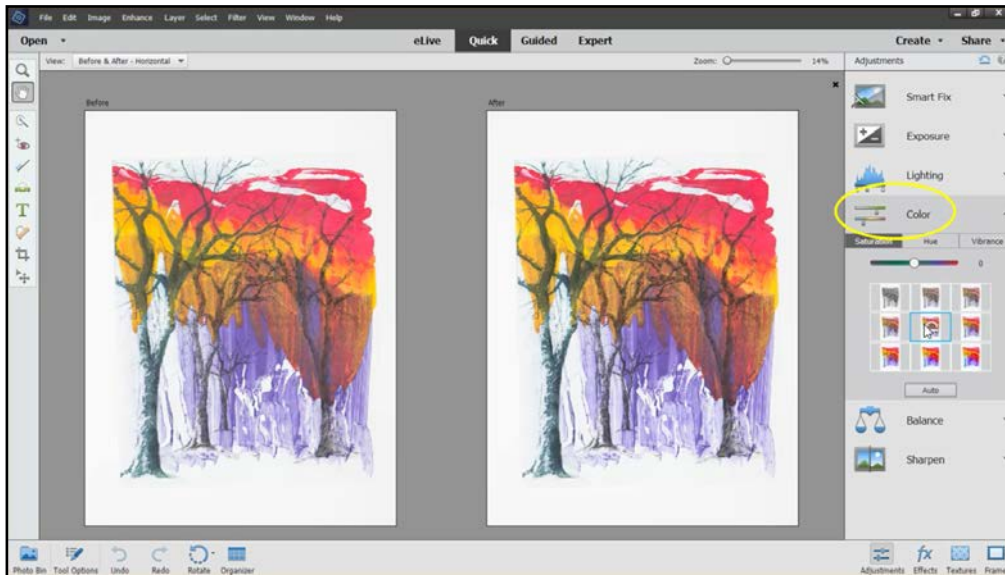


Edit for Polish

notes

Better Color

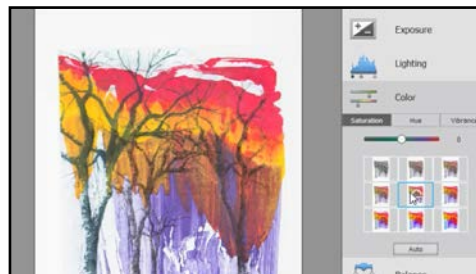
Sometimes you may need to fine-tune an image because the colors in the artwork look a bit washed out or the white balance adjustment wasn't quite right, and you want—better color. That's when the Color adjustments can come to the rescue.



I'll click on Color in the adjustments panel, where you'll see three tabs—Saturation, Hue, and Vibrance. Let's see how each of the adjustments changes the image.

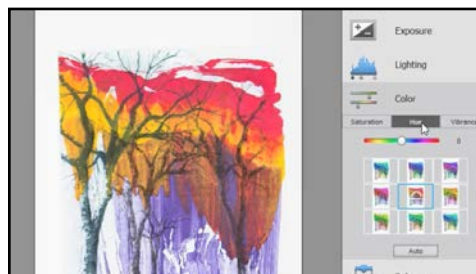
Saturation

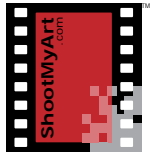
The Saturation adjustment makes the colors in the image more vivid or more muted. As with the other adjustments, choose the preset thumbnail that looks the best, drag the slider, or type in a number between -100 and +100.



Hue

The Hue adjustment shifts all of the colors across the entire spectrum. The presets can make for some funky creative effects, but not for the images of your art. This adjustment is best used for small changes with the slider or by typing in a number with the slider or by typing in a number if the colors need just a tweak.





Edit for Polish

notes

Vibrance

The Vibrance adjustment is like Saturation, but it enhances the saturation selectively—causing the less saturated colors to become more vivid, without oversaturating the already vivid colors. If the colors in your image seem a bit dull, this is the adjustment to try first.



And again, just ignore the “Auto” button at the bottom.

Color Adjustments

1. Open an image in Photoshop® Elements in Quick edit mode (or another photo editing program on your computer).
2. Click on Color in the adjustments panel
3. Adjust the Saturation
 - Click on the Saturation tab
 - Move the cursor over each of the thumbnail presets
 - Click on the thumbnail that best adjusts the image
 - Drag the slider to fine-tune the adjustment
4. Adjust the Hue
 - Click on the Hue tab
 - Move the cursor over each of the thumbnail presets to see the creative effects. Wow!
 - Now drag the slider to make only a small adjustment
 - Click on the number next to the slider and use the up or down arrow on the keyboard to fine-tune the adjustment
5. Adjust the Vibrance
 - Click on the Vibrance tab
 - Move the cursor over each of the thumbnail presets
 - Click on the thumbnail that best adjusts the image
 - Drag the slider to fine-tune the adjustment
6. Go ahead and try the “Auto” adjustment button. Did it provide a better result than the adjustments you made? Yes No If no, describe the difference here: